



# Product Update Notification

## Unismart 3 DBBASE V2.28

Date: August 2021

### 1. Unismart 3 Device

Item	Before	After
APP	V39.0	V39.0
DBBASE	V2.17	V2.28
H18	V1.6	V1.8

### 2. Uni-3 New JIG (N/A)

### 3. Update Instruction

- ① Update JIG H18 and optimize the reset function for Ricoh 3502 series.

### 4. Uni-3 Newly-added Blank Chip List (N/A)

### 5. Uni-3 Updated Model List

Brand	PCB Code	OEM Code	JIG	Yield	Color	Region	For Use in Printers
RICOH	PCB-B44	MP-C2503/841932	H18	15K	BK	AU	Ricoh MP C2003/MP C2503/ MP C2004/MP C2504
RICOH	PCB-B44	MP-C2503H/841935	H18	9.5K	C		
RICOH	PCB-B44	MP-C2503H/841934	H18	9.5K	M		
RICOH	PCB-B44	MP-C2503H/841933	H18	9.5K	Y		
RICOH	PCB-B44	MP-C2503/841925	H18	15K	BK	EUR	
RICOH	PCB-B44	MP-C2503H/841928	H18	9.5K	C		
RICOH	PCB-B44	MP-C2503H/841927	H18	9.5K	M		
RICOH	PCB-B44	MP-C2503H/841926	H18	9.5K	Y		
RICOH	PCB-B44	MP-C2503/841929	H18	5.5K/3K	Y		
RICOH	PCB-B44	MP-C2503/841930	H18	5.5K/3K	M		
RICOH	PCB-B44	MP-C2503/841931	H18	5.5K/3K	C		
RICOH	PCB-B44	MP-C2503/841918	H18	15K	BK	NA	
RICOH	PCB-B44	MP-C2503H/841921	H18	9.5K	C		
RICOH	PCB-B44	MP-C2503H/841920	H18	9.5K	M		



RICOH	PCB-B44	MP-C2503H/841919	H18	9.5K	Y			
RICOH	PCB-B44	MP-C2503/841924	H18	5.5K	C			
RICOH	PCB-B44	MP-C2503/841923	H18	5.5K	M			
RICOH	PCB-B44	MP-C2503/841922	H18	5.5K	Y			
RICOH	PCB-B44	MP-C2503/841946	H18	15K	BK	CHN	Ricoh MP C2004ex/C2004/ C2504/C2504ex/C2503	
RICOH	PCB-B44	MP-C2503/841947	H18	9.5K	Y			
RICOH	PCB-B44	MP-C2503/841948	H18	9.5K	M			
RICOH	PCB-B44	MP-C2503/841949	H18	9.5K	C			
RICOH	PCB-B44	MP-C2503/600281	H18	10K	BK	JP	Ricoh MP C2004ex/C2004/C2504/ C2504ex/C2503/IM C2500	
RICOH	PCB-B44	MP-C2503/600284	H18	3K	C			
RICOH	PCB-B44	MP-C2503/600283	H18	3K	M			
RICOH	PCB-B44	MP-C2503/600282	H18	3K	Y			
RICOH	PCB-B44	MP-C3503/841829	H18	29.5K	BK	AU	Ricoh MP C3003/MP C3503/ MP C3004/MP C3504	
RICOH	PCB-B44	MP-C3503/841832	H18	18K	C			
RICOH	PCB-B44	MP-C3503/841831	H18	18K	M			
RICOH	PCB-B44	MP-C3503/841830	H18	18K	Y			
RICOH	PCB-B44	MP-C3503/841841	H18	29.5K	BK	CHN		
RICOH	PCB-B44	MP-C3503/841844	H18	18K	C			
RICOH	PCB-B44	MP-C3503/841843	H18	18K	M			
RICOH	PCB-B44	MP-C3503/841842	H18	18K	Y			
RICOH	PCB-B44	MP-C3503/841817	H18	29.5K	BK	EUR		
RICOH	PCB-B44	MP-C3503/841820	H18	18K	C			
RICOH	PCB-B44	MP-C3503/841819	H18	18K	M			
RICOH	PCB-B44	MP-C3503/841818	H18	18K	Y			
RICOH	PCB-B44	MP-C3503/600249	H18	29.5K	BK	JP		
RICOH	PCB-B44	MP-C3503/600252	H18	18K	C			
RICOH	PCB-B44	MP-C3503/600251	H18	18K	M			
RICOH	PCB-B44	MP-C3503/600250	H18	18K	Y			
RICOH	PCB-B44	MP-C3503/841813	H18	29.5K	BK	NA		
RICOH	PCB-B44	MP-C3503/841816	H18	18K	C			
RICOH	PCB-B44	MP-C3503/841815	H18	18K	M			
RICOH	PCB-B44	MP-C3503/841814	H18	18K	Y			
RICOH	PCB-B44	MP-C6003/841865	H18	33K	BK	AU	Ricoh MP C5503/MP C4503/ MP C6003/MP C4504/ MP C5504/MP C6004	
RICOH	PCB-B44	MP-C6003/841868	H18	22.5K	C			
RICOH	PCB-B44	MP-C6003/841867	H18	22.5K	M			
RICOH	PCB-B44	MP-C6003/841866	H18	22.5K	Y			
RICOH	PCB-B44	MP-C6003/841877	H18	33K	BK	CHN		
RICOH	PCB-B44	MP-C6003/841880	H18	22.5K	C			
RICOH	PCB-B44	MP-C6003/841879	H18	22.5K	M			
RICOH	PCB-B44	MP-C6003/841878	H18	22.5K	Y			
RICOH	PCB-B44	MP-C6003/841853	H18	33K	BK	EUR		



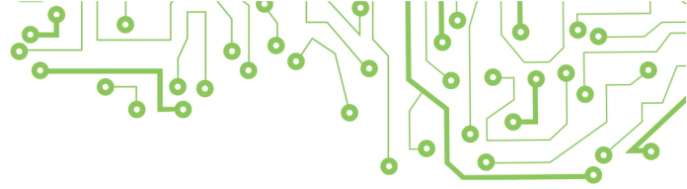
RICOH	PCB-B44	MP-C6003/841856	H18	22.5K	C	NA	
RICOH	PCB-B44	MP-C6003/841855	H18	22.5K	M		
RICOH	PCB-B44	MP-C6003/841854	H18	22.5K	Y		
RICOH	PCB-B44	MP-C6003/841849	H18	33K	BK		
RICOH	PCB-B44	MP-C6003/841852	H18	22.5K	C		
RICOH	PCB-B44	MP-C6003/841851	H18	22.5K	M		
RICOH	PCB-B44	MP-C6003/841850	H18	22.5K	Y		
RICOH	PCB-B44	MP-C6003/600244	H18	33K	BK		
RICOH	PCB-B44	MP-C6003/600245	H18	22.5K	C		
RICOH	PCB-B44	MP-C6003/600246	H18	22.5K	M		
RICOH	PCB-B44	MP-C6003/600247	H18	22.5K	Y		
RICOH	PCB-B44	MP-C406/842111	H18	17K	BK		
RICOH	PCB-B44	MP-C406/842112	H18	6K	C		
RICOH	PCB-B44	MP-C406/842113	H18	6K	M		
RICOH	PCB-B44	MP-C406/842114	H18	6K	Y		
RICOH	PCB-B44	MP-C406/842095	H18	17K	BK		
RICOH	PCB-B44	MP-C406/842096	H18	6K	C		
RICOH	PCB-B44	MP-C406/842097	H18	6K	M		
RICOH	PCB-B44	MP-C406/842098	H18	6K	Y		
RICOH	PCB-B44	MP-C406/842091	H18	17K	BK		
RICOH	PCB-B44	MP-C406/842092	H18	6K	C		
RICOH	PCB-B44	MP-C406/842093	H18	6K	M		
RICOH	PCB-B44	MP-C406/842094	H18	6K	Y		
RICOH	PCB-B44	MP-C406/600342	H18	17K	BK	EUR	
RICOH	PCB-B44	MP-C406/600343	H18	6K	C		
RICOH	PCB-B44	MP-C406/600344	H18	6K	M		
RICOH	PCB-B44	MP-C406/600345	H18	6K	Y		
RICOH	PCB-B44	MP-C406/600342	H18	17K	BK	JP	
RICOH	PCB-B44	MP-C406/600343	H18	6K	C		
RICOH	PCB-B44	MP-C406/600344	H18	6K	M		
RICOH	PCB-B44	MP-C406/600345	H18	6K	Y		
RICOH	PCB-B44	MP-C407/842207	H18	17.5K	BK	WW	Ricoh MP C407SPF
RICOH	PCB-B44	MP-C407/842208	H18	8K	C		
RICOH	PCB-B44	MP-C407/842209	H18	8K	M		
RICOH	PCB-B44	MP-C407/842210	H18	8K	Y		
RICOH	PCB-B44	SP-C840H/600637	H18	25K	BK	JP	Ricoh SP C841/C841M/ C840/C840M
RICOH	PCB-B44	SP-C840H/600634	H18	20K	C		
RICOH	PCB-B44	SP-C840H/600635	H18	20K	M		
RICOH	PCB-B44	SP-C840H/600636	H18	20K	Y		
RICOH	PCB-B44	SP-C840/600633	H18	12K	BK		
RICOH	PCB-B44	SP-C840/600630	H18	12K	C		
RICOH	PCB-B44	SP-C840/600631	H18	12K	M		
RICOH	PCB-B44	SP-C840/600632	H18	12K	Y		
RICOH	PCB-B44	SP-C840A/821255	H18	43K	BK	WW(ex. JP)	Ricoh SP C840DN/SP C842DN
RICOH	PCB-B44	SP-C840A/821258	H18	34K	C		



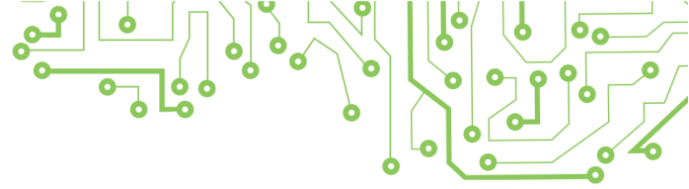
RICOH	PCB-B44	SP-C840A/821257	H18	34K	M			
RICOH	PCB-B44	SP-C840A/821256	H18	34K	Y			
RICOH	PCB-B44	SP-C830H/821181	H18	23.5K	BK	WW(ex. JP)	Ricoh IPSiO SP C831/ 831M/C830/830M	
RICOH	PCB-B44	SP-C830H/821184	H18	27K	C			
RICOH	PCB-B44	SP-C830H/821183	H18	27K	M			
RICOH	PCB-B44	SP-C830H/821182	H18	27K	Y			
RICOH	PCB-B44	SP-C830H/600514	H18	25K	BK			
RICOH	PCB-B44	SP-C830H/600517	H18	20K	C			
RICOH	PCB-B44	SP-C830H/600516	H18	20K	M	JP		
RICOH	PCB-B44	SP-C830H/600515	H18	20K	Y			
RICOH	PCB-B44	SP-C830/600518	H18	12K	BK			
RICOH	PCB-B44	SP-C830/600521	H18	12K	C			
RICOH	PCB-B44	SP-C830/600520	H18	12K	M			
RICOH	PCB-B44	SP-C830/600519	H18	12K	Y			
RICOH	PCB-B44	SP-C830/821149	H18	12K	BK	WW(ex. JP)		
RICOH	PCB-B44	SP-C830/821152	H18	12K	C			
RICOH	PCB-B44	SP-C830/821151	H18	12K	M			
RICOH	PCB-B44	SP-C830/821150	H18	12K	Y			
RICOH	PCB-B44	MP-C305H/841633	H18	12K	BK	CHN		Ricoh Aficio MP C305spf
RICOH	PCB-B44	MP-C305H/841625	H18	4K	C			
RICOH	PCB-B44	MP-C305H/841626	H18	4K	M			
RICOH	PCB-B44	MP-C305H/841627	H18	4K	Y			
RICOH	PCB-B44	MP-C305H/842079	H18	12K	BK	EUR		
RICOH	PCB-B44	MP-C305H/842082	H18	4K	C			
RICOH	PCB-B44	MP-C305H/842081	H18	4K	M			
RICOH	PCB-B44	MP-C305H/841597	H18	4K	Y			
RICOH	PCB-B44	MP-C305H/842119	H18	12K	BK	NA		
RICOH	PCB-B44	MP-C305H/841122	H18	4K	C			
RICOH	PCB-B44	MP-C305H/841121	H18	4K	M			
RICOH	PCB-B44	MP-C305H/841120	H18	4K	Y	JP		
RICOH	PCB-B44	MP-C305H/600273	H18	12K	BK			
RICOH	PCB-B44	MP-C305H/600274	H18	4K	C			
RICOH	PCB-B44	MP-C305H/600275	H18	4K	M			
RICOH	PCB-B44	MP-C305H/600276	H18	4K	Y	---		
RICOH	PCB-B44	MP-C305H/842079	H18	12K	BK			
RICOH	PCB-B44	MP-C305H/842082	H18	4K	C			
RICOH	PCB-B44	MP-C305H/842081	H18	4K	M			
RICOH	PCB-B44	MP-C305H/842080	H18	4K	Y			
RICOH	PCB-B44	MP-C3502/841675	H18	28K	BK	CHN	Ricoh MPC3002/MPC3502	
RICOH	PCB-B44	MP-C3502/841678	H18	18K	C			
RICOH	PCB-B44	MP-C3502/841677	H18	18K	M			



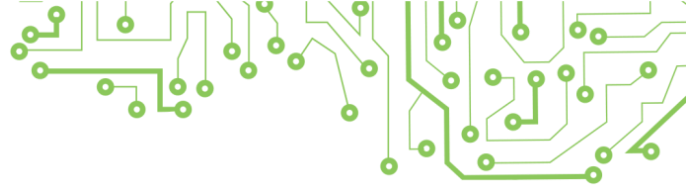
RICOH	PCB-B44	MP-C3502/841676	H18	18K	Y	NA	
RICOH	PCB-B44	MP-C3502/841735	H18	28K	BK		
RICOH	PCB-B44	MP-C3502/841738	H18	18K	C		
RICOH	PCB-B44	MP-C3502/841737	H18	18K	M		
RICOH	PCB-B44	MP-C3502/841736	H18	18K	Y		
RICOH	PCB-B44	MP-C5502/841707	H18	31K	BK	CHN	
RICOH	PCB-B44	MP-C5502/841710	H18	22.5K	C		
RICOH	PCB-B44	MP-C5502/841709	H18	22.5K	M		
RICOH	PCB-B44	MP-C5502/841708	H18	22.5K	Y	EUR	
RICOH	PCB-B44	MP-C5502/842020	H18	31K	BK		
RICOH	PCB-B44	MP-C5502/842023	H18	22.5K	C		
RICOH	PCB-B44	MP-C5502/842022	H18	22.5K	M		
RICOH	PCB-B44	MP-C5502/842021	H18	22.5K	Y	NA	
RICOH	PCB-B44	MP-C5502/841751	H18	31K	BK		
RICOH	PCB-B44	MP-C5502/841754	H18	22.5K	C		
RICOH	PCB-B44	MP-C5502/841753	H18	22.5K	M		
RICOH	PCB-B44	MP-C5502/841752	H18	22.5K	Y	EUR	
RICOH	PCB-B44	MP-C3502/841651	H18	28K	BK		
RICOH	PCB-B44	MP-C3502/841652	H18	18K	Y		
RICOH	PCB-B44	MP-C3502/841653	H18	18K	M		
RICOH	PCB-B44	MP-C3502/841654	H18	18K	C	AU	
RICOH	PCB-B44	MP-C3502/841663	H18	28K	BK		
RICOH	PCB-B44	MP-C3502/841664	H18	18K	Y		
RICOH	PCB-B44	MP-C3502/841665	H18	18K	M		
RICOH	PCB-B44	MP-C3502/841666	H18	18K	C	JP	
RICOH	PCB-B44	MP-C1803/600286	H18	3K	BK		
RICOH	PCB-B44	MP-C1803/600287	H18	1.4K	C		
RICOH	PCB-B44	MP-C1803/600288	H18	1.4K	M		
RICOH	PCB-B44	MP-C1803/600289	H18	1.4K	Y	Ricoh MP C1803	
RICOH	PCB-B44	MP-C8003/842196	H18	47K	BK		NA
RICOH	PCB-B44	MP-C8003/842199	H18	26K	C		
RICOH	PCB-B44	MP-C8003/842198	H18	26K	M		
RICOH	PCB-B44	MP-C8003/842197	H18	26K	Y		
RICOH	PCB-B44	MP-C8003/600375	H18	47K	BK		JP
RICOH	PCB-B44	MP-C8003/600377	H18	26K	C		
RICOH	PCB-B44	MP-C8003/600378	H18	26K	M		
RICOH	PCB-B44	MP-C8003/600376	H18	26K	Y		
RICOH	PCB-B44	MP-C8003/842192	H18	47K	BK		EUR
RICOH	PCB-B44	MP-C8003/842193	H18	26K	Y		
RICOH	PCB-B44	MP-C8003/842194	H18	26K	M		
RICOH	PCB-B44	MP-C8003/842195	H18	26K	C		



RICOH	PCB-B44	C5200/828422	H18	33K	BK	NA	Ricoh Pro C5200S/Pro C5210S
RICOH	PCB-B44	C5200/828425	H18	24K	C		
RICOH	PCB-B44	C5200/828424	H18	24K	M		
RICOH	PCB-B44	C5200/828423	H18	24K	Y		
RICOH	PCB-B44	C5200/600379	H18	33K	BK	JP	
RICOH	PCB-B44	C5200/600382	H18	24K	C		
RICOH	PCB-B44	C5200/600381	H18	24K	M		
RICOH	PCB-B44	C5200/600380	H18	24K	Y		
RICOH	PCB-B44	MP-C400/841724	H18	10K	BK	NA	Ricoh MP C401/C401SR
RICOH	PCB-B44	MP-C400/841725	H18	10K	C		
RICOH	PCB-B44	MP-C400/841726	H18	10K	M		
RICOH	PCB-B44	MP-C400/841727	H18	10K	Y		
RICOH	PCB-B44	MP-C400/842038	H18	10K	BK	EUR	
RICOH	PCB-B44	MP-C400/842039	H18	10K	C		
RICOH	PCB-B44	MP-C400/842040	H18	10K	M		
RICOH	PCB-B44	MP-C400/842041	H18	10K	Y		
RICOH	PCB-B44	MP-C2503/841950	H18	3K	Y	CHN	Ricoh IM C2000/2500
RICOH	PCB-B44	MP-C2503/841951	H18	3K	M		
RICOH	PCB-B44	MP-C2503/841952	H18	3K	C		
RICOH	PCB-B44	IM-C2500K/842307	H18	16.5K	BK		
RICOH	PCB-B44	IM-C2500Y/842308	H18	10.5K	Y	NA	
RICOH	PCB-B44	IM-C2500M/842309	H18	10.5K	M		
RICOH	PCB-B44	IM-C2500C/842310	H18	10.5K	C		
RICOH	PCB-B44	IM-C2500K/842311	H18	16.5K	BK		
RICOH	PCB-B44	IM-C2500Y/842312	H18	10.5K	Y	EUR	
RICOH	PCB-B44	IM-C2500M/842313	H18	10.5K	M		
RICOH	PCB-B44	IM-C2500C/842314	H18	10.5K	C		
RICOH	PCB-B44	IM-C2500K/842327	H18	16.5K	BK		
RICOH	PCB-B44	IM-C2500Y/842328	H18	10.5K	Y	CHN	
RICOH	PCB-B44	IM-C2500M/842329	H18	10.5K	M		
RICOH	PCB-B44	IM-C2500C/842330	H18	10.5K	C		
RICOH	PCB-B44	IM-C6000Y/600241	H18	15K	Y		
RICOH	PCB-B44	IM-C6000M/600242	H18	15K	M	JP	Ricoh IM C6000/C5500/C4500
RICOH	PCB-B44	IM-C6000C/600243	H18	15K	C		
RICOH	PCB-B44	IM-C2000K/600436	H18	3K	BK		
RICOH	PCB-B44	IM-C2000Y/600437	H18	1.4K	Y	JP	Ricoh IM C2000/2000F
RICOH	PCB-B44	IM-C2000M/600438	H18	1.4K	M		
RICOH	PCB-B44	IM-C2000C/600439	H18	1.4K	C		
RICOH	PCB-B44	MP-C501K/842243	H18	14K	BK	NA	Ricoh MP C501SP
RICOH	PCB-B44	MP-C501C/842244	H18	12K	C		
RICOH	PCB-B44	MP-C501M/842245	H18	12K	M		



RICOH	PCB-B44	MP-C501Y/842246	H18	12K	Y	EUR		
RICOH	PCB-B44	MP-C501K/842247	H18	14K	BK			
RICOH	PCB-B44	MP-C501C/842248	H18	12K	C			
RICOH	PCB-B44	MP-C501M/842249	H18	12K	M			
RICOH	PCB-B44	MP-C501Y/842250	H18	12K	Y			
RICOH	PCB-B44	IM-C3500K/842251	H18	31K	BK	NA	Ricoh IM C3000/IM C3500	
RICOH	PCB-B44	IM-C3500Y/842252	H18	19K	Y			
RICOH	PCB-B44	IM-C3500M/842253	H18	19K	M			
RICOH	PCB-B44	IM-C3500C/842254	H18	19K	C			
RICOH	PCB-B44	IM-C3500K/842255	H18	31K	BK	EUR		
RICOH	PCB-B44	IM-C3500Y/842256	H18	19K	Y			
RICOH	PCB-B44	IM-C3500M/842257	H18	19K	M			
RICOH	PCB-B44	IM-C3500C/842258	H18	19K	C			
RICOH	PCB-B44	IM-C3000K/842271	H18	31K	BK			
RICOH	PCB-B44	IM-C3000Y/842272	H18	19K	Y	CHN		Ricoh IM C3000/3000
RICOH	PCB-B44	IM-C3000M/842273	H18	19K	M			
RICOH	PCB-B44	IM-C3000C/842274	H18	19K	C			
RICOH	PCB-B44	IM-C6000K/842279	H18	33K	BK			
RICOH	PCB-B44	IM-C6000Y/842280	H18	22.5K	Y	NA	Ricoh IM C4500/C6000	
RICOH	PCB-B44	IM-C6000M/842281	H18	22.5K	M			
RICOH	PCB-B44	IM-C6000C/842282	H18	22.5K	C			
RICOH	PCB-B44	IM-C6000K/842283	H18	33K	BK	EUR		
RICOH	PCB-B44	IM-C6000Y/842284	H18	22.5K	Y			
RICOH	PCB-B44	IM-C6000M/842285	H18	22.5K	M			
RICOH	PCB-B44	IM-C6000C/842286	H18	22.5K	C			
RICOH	PCB-B44	IM-C6000K/842299	H18	33K	BK			CHN
RICOH	PCB-B44	IM-C6000Y/842300	H18	22.5K	Y			
RICOH	PCB-B44	IM-C6000M/842301	H18	22.5K	M			
RICOH	PCB-B44	IM-C6000C/842302	H18	22.5K	C			
RICOH	PCB-B44	C5100Y/600231	H18	30K	Y	JP		
RICOH	PCB-B44	C5100M/600232	H18	30K	M			
RICOH	PCB-B44	C5100C/600233	H18	30K	C			
RICOH	PCB-B44	C5100K/600234	H18	30K	BK			
RICOH	PCB-B44	C5100K/828221	H18	30K	BK	EUR		
RICOH	PCB-B44	C5100Y/828222	H18	30K	Y			
RICOH	PCB-B44	C5100M/828223	H18	30K	M			
RICOH	PCB-B44	C5100C/828224	H18	30K	C			
RICOH	PCB-B44	C5100K/828350	H18	30K	BK		NA	
RICOH	PCB-B44	C5100Y/828351	H18	30K	Y			
RICOH	PCB-B44	C5100M/828352	H18	30K	M			
RICOH	PCB-B44	C5100C/828353	H18	30K	C			



RICOH	PCB-B44	SP-C430AY/821075	H18	24K	Y	EUR	Ricoh SP C440DN	
RICOH	PCB-B44	SP-C430AM/821076	H18	24K	M			
RICOH	PCB-B44	SP-C430AC/821077	H18	24K	C			
RICOH	PCB-B44	SP-C430AK/821094	H18	21K	BK			
RICOH	PCB-B44	SP-C430AK/821105	H18	21K	BK			
RICOH	PCB-B44	SP-C430AY/821106	H18	24K	Y	NA		
RICOH	PCB-B44	SP-C430AM/821107	H18	24K	M			
RICOH	PCB-B44	SP-C430AC/821108	H18	24K	C			
RICOH	PCB-B44	SP-C830HK/821137	H18	23.5K	BK	AU		Ricoh SP C830/831
RICOH	PCB-B44	SP-C830HY/821138	H18	27K	Y			
RICOH	PCB-B44	SP-C830HM/821139	H18	27K	M			
RICOH	PCB-B44	SP-C830HC/821140	H18	27K	C	EUR		
RICOH	PCB-B44	SP-C830HK/821185	H18	23.5K	BK			
RICOH	PCB-B44	SP-C830HY/821186	H18	16K	Y			
RICOH	PCB-B44	SP-C830HM/821187	H18	16K	M			
RICOH	PCB-B44	SP-C830HC/821188	H18	16K	C	EUR		
RICOH	PCB-B44	SP-C840HK/821259	H18	30K	BK			
RICOH	PCB-B44	SP-C840HY/821260	H18	22.5K	Y			
RICOH	PCB-B44	SP-C840HM/821261	H18	22.5K	M			
RICOH	PCB-B44	SP-C840HC/821262	H18	22.5K	C	EUR		
RICOH	PCB-B44	MP-C5502/841695	H18	31K	BK			
RICOH	PCB-B44	MP-C5502/841696	H18	22.5K	Y			
RICOH	PCB-B44	MP-C5502/841697	H18	22.5K	M			
RICOH	PCB-B44	MP-C5502/841698	H18	22.5K	C	AU		
RICOH	PCB-B44	MP-C8002/841784	H18	48.5K	BK			
RICOH	PCB-B44	MP-C8002/841785	H18	29K	Y			
RICOH	PCB-B44	MP-C8002/841786	H18	29K	M			
RICOH	PCB-B44	MP-C8002/841787	H18	29K	C	EUR		
RICOH	PCB-B44	MP-C8002/842083	H18	48.5K	BK			
RICOH	PCB-B44	MP-C8002/842084	H18	29K	Y			
RICOH	PCB-B44	MP-C8002/842085	H18	29K	M	NA		
RICOH	PCB-B44	MP-C8002/842086	H18	29K	C			
RICOH	PCB-B44	Ricoh-3502	H18	---	---	---	Ricoh Aficio MP C305spf/C306/ C406/C307/C407spf/C1803/ C2003/C2503/C2004/C2504/C3002 /C3003/C3502/C3503/C3004/C350 4/C4502/C4503/C4504/C5502/C55 03/C5504/C6003/C6004/C6502sp/ C6503/C8002sp/C8003/SP C830/ 830M/C831/831M/C841/a1/C841M /a1/C840/a1/C840M/a1/C840DN/ C842DN/Pro C5100S/C5110S/ C5200S/C5210S	

## 6. Operations to Confirm the Updated Version





When the device has been updated, please enter the Settings-Version interface to confirm the updated version by below steps (find the appendix in Unismart 3 Device for reference)

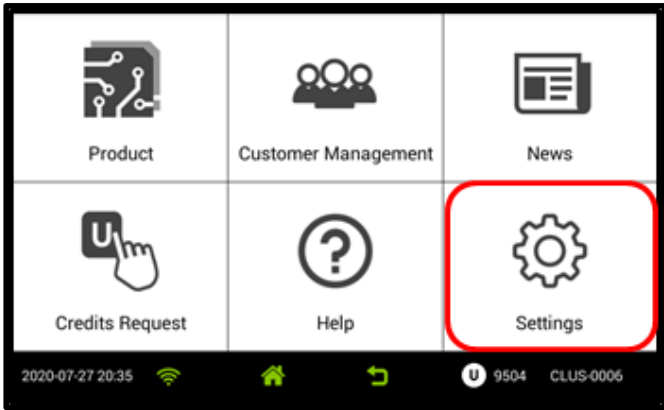


Figure 1

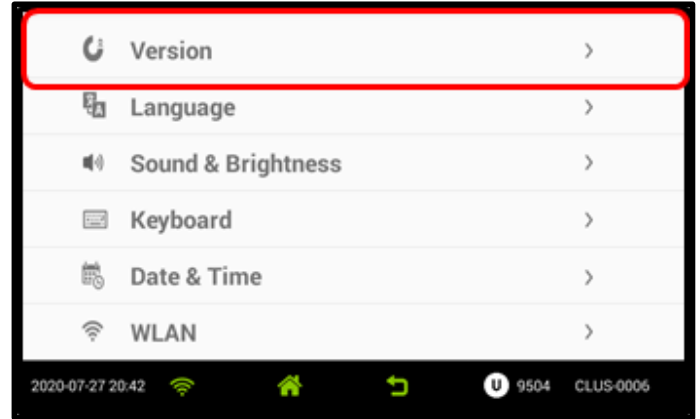


Figure 2

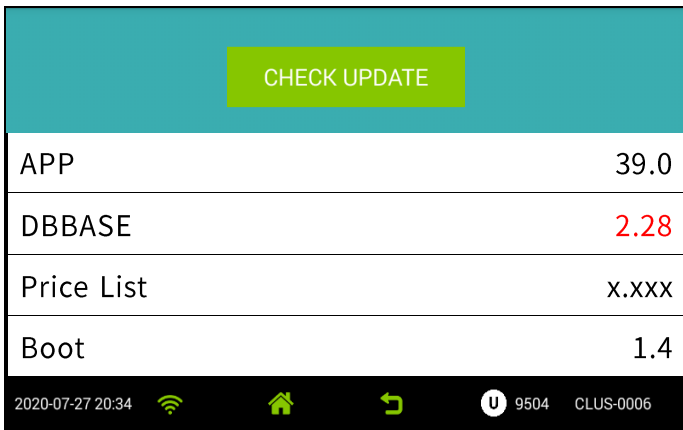


Figure 3 Versions without JIG connecting

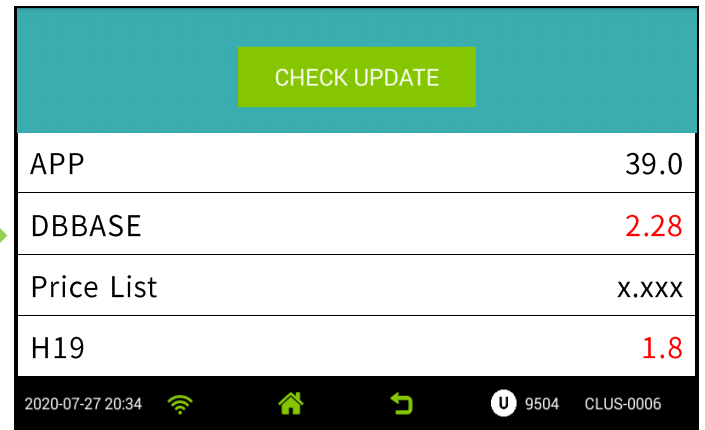


Figure 4 Versions with JIG connecting

Version list for the device & JIG (click DBBASE to check)

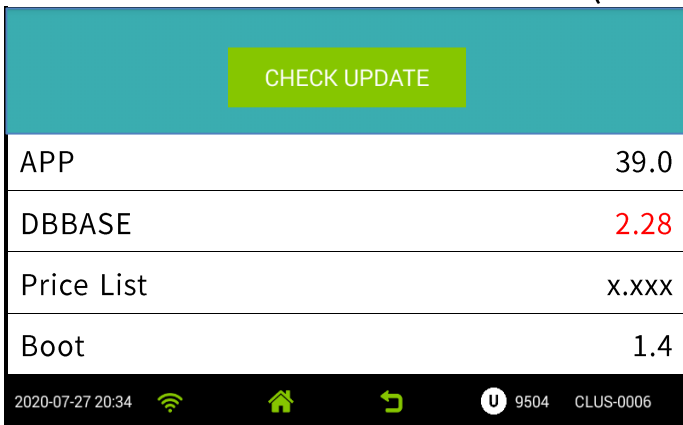


Figure 5

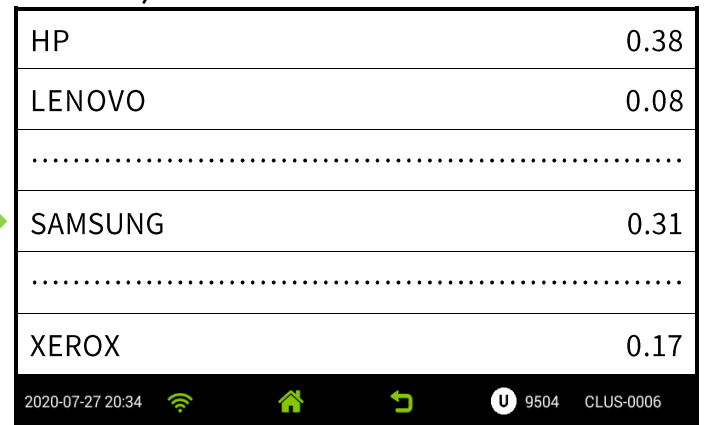


Figure 6



SN-XEROX-7100	0.04
TALLY	0.03
TOSHIBA	0.03
UTAX	0.03
VersionInfo	2.28
XEROX	0.17




2020-07-27 20:34     9504 CLUS-0006

Figure 7

Hardware #1	11.13
.....	
H18	1.8
H24	3.6
H25	1.5
ST2	4.5

2020-07-27 20:34     9504 CLUS-0006

Figure 8

“Apex” herein refers to Apex Microelectronics Co., Ltd. The information contained herein is subject to change without prior notification. Apex shall not be liable for technical or editorial errors or omissions contained herein. Photographed products may not always match the description.