



Product Update Notification

Unismart 3 DBBASE V2.33

Date: September 2021

1. Unismart 3 Device

| Item | Before | After |
|---------|--------|-------|
| APP | V39.0 | V39.0 |
| DBBASE | V2.28 | V2.33 |
| BR3 | V2.2 | V2.8 |
| BROTHER | V0.15 | V0.19 |

2. Uni-3 New JIG (N/A)

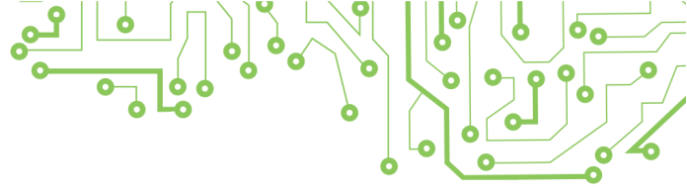
3. Update Instruction

① Update JIG BR3 and optimized the rest function of Brother III series.

4. Uni-3 Newly-added Blank Chip List (N/A)

5. Uni-3 Updated Model List

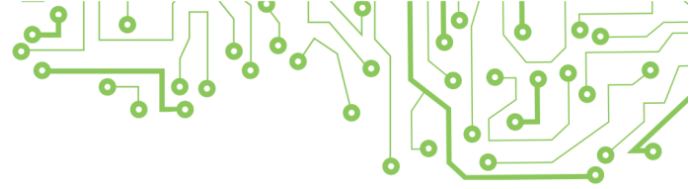
| Brand | PCB Code | OEM Code | JIG | Yield | Color | Region | For Use in Printers |
|---------|----------|----------|-----|-------|-------|--------|---|
| BROTHER | PCB-BR3 | LC3017BK | BR3 | --- | BK | USA | Brother MFC-J5330DW/J6530DW/ J6930DW/J6730DW |
| BROTHER | PCB-BR3 | LC3017C | BR3 | | C | | |
| BROTHER | PCB-BR3 | LC3017M | BR3 | | M | | |
| BROTHER | PCB-BR3 | LC3017Y | BR3 | | Y | | |
| BROTHER | PCB-BR3 | LC3019BK | BR3 | | BK | | |
| BROTHER | PCB-BR3 | LC3019C | BR3 | | C | | |
| BROTHER | PCB-BR3 | LC3019M | BR3 | | M | | |
| BROTHER | PCB-BR3 | LC3019Y | BR3 | | Y | | |
| BROTHER | PCB-BR3 | LC3029BK | BR3 | --- | BK | USA | Brother MFC-J5830DW/J5830DW XL/ J6535DW/J6535DW XL/ J5930DW/J6935DW |
| BROTHER | PCB-BR3 | LC3029C | BR3 | | C | | |
| BROTHER | PCB-BR3 | LC3029M | BR3 | | M | | |
| BROTHER | PCB-BR3 | LC3029Y | BR3 | | Y | | |
| BROTHER | PCB-BR3 | LC3117BK | BR3 | --- | BK | JPN | Brother MFC-J6980CDW/J6580CDW |
| BROTHER | PCB-BR3 | LC3117C | BR3 | | C | | |
| BROTHER | PCB-BR3 | LC3117M | BR3 | | M | | |



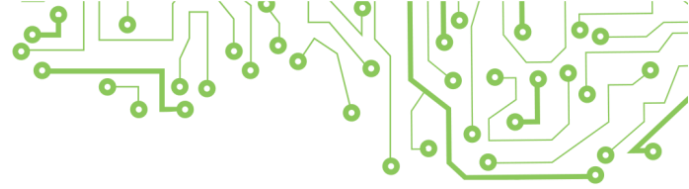
| | | | | | | | |
|---------|---------|----------|-----|-----|----|-----|---|
| BROTHER | PCB-BR3 | LC3117Y | BR3 | | Y | | |
| BROTHER | PCB-BR3 | LC3119BK | BR3 | | BK | | |
| BROTHER | PCB-BR3 | LC3119C | BR3 | | C | | |
| BROTHER | PCB-BR3 | LC3119M | BR3 | | M | | |
| BROTHER | PCB-BR3 | LC3119Y | BR3 | | Y | | |
| BROTHER | PCB-BR3 | LC3129BK | BR3 | --- | BK | JPN | Brother MFC-J6995CDW |
| BROTHER | PCB-BR3 | LC3129C | BR3 | | C | | |
| BROTHER | PCB-BR3 | LC3129M | BR3 | | M | | |
| BROTHER | PCB-BR3 | LC3129Y | BR3 | | Y | | |
| BROTHER | PCB-BR3 | LC3213BK | BR3 | --- | BK | EUR | Brother MFC-J890DW/J895DW/ DCP-J772DW/J774DW |
| BROTHER | PCB-BR3 | LC3213C | BR3 | | C | | |
| BROTHER | PCB-BR3 | LC3213M | BR3 | | M | | |
| BROTHER | PCB-BR3 | LC3213Y | BR3 | | Y | | |
| BROTHER | PCB-BR3 | LC3217BK | BR3 | --- | BK | EUR | Brother MFC-J5330DW/J5335DW/ J5730DW/J5930DW/J6530DW/ J6930DW/J6935DW |
| BROTHER | PCB-BR3 | LC3217C | BR3 | | C | | |
| BROTHER | PCB-BR3 | LC3217M | BR3 | | M | | |
| BROTHER | PCB-BR3 | LC3217Y | BR3 | | Y | | |
| BROTHER | PCB-BR3 | LC3219BK | BR3 | | BK | | |
| BROTHER | PCB-BR3 | LC3219C | BR3 | | C | | |
| BROTHER | PCB-BR3 | LC3219M | BR3 | | M | | |
| BROTHER | PCB-BR3 | LC3219Y | BR3 | | Y | | |
| BROTHER | PCB-BR3 | LC3317BK | BR3 | --- | BK | AUS | Brother MFC-J5330DW/J5730DW/ J6530DW/J6930DW/J6730DW |
| BROTHER | PCB-BR3 | LC3317C | BR3 | | C | | |
| BROTHER | PCB-BR3 | LC3317M | BR3 | | M | | |
| BROTHER | PCB-BR3 | LC3317Y | BR3 | | Y | | |
| BROTHER | PCB-BR3 | LC3319BK | BR3 | | BK | | |
| BROTHER | PCB-BR3 | LC3319C | BR3 | | C | | |
| BROTHER | PCB-BR3 | LC3319M | BR3 | | M | | |
| BROTHER | PCB-BR3 | LC3319Y | BR3 | | Y | | |
| BROTHER | PCB-BR3 | LC3329BK | BR3 | --- | BK | AUS | Brother MFC-J5930DW/J6935DW |
| BROTHER | PCB-BR3 | LC3329C | BR3 | | C | | |
| BROTHER | PCB-BR3 | LC3329M | BR3 | | M | | |
| BROTHER | PCB-BR3 | LC3329Y | BR3 | | Y | | |
| BROTHER | PCB-BR3 | LC3617BK | BR3 | --- | BK | AP | Brother MFC-J2330DW/ J2730DW/J3530DW/J3930DW |
| BROTHER | PCB-BR3 | LC3617C | BR3 | | C | | |
| BROTHER | PCB-BR3 | LC3617M | BR3 | | M | | |
| BROTHER | PCB-BR3 | LC3617Y | BR3 | | Y | | |
| BROTHER | PCB-BR3 | LC3619BK | BR3 | | BK | | |
| BROTHER | PCB-BR3 | LC3619C | BR3 | | C | | |
| BROTHER | PCB-BR3 | LC3619M | BR3 | | M | | |
| BROTHER | PCB-BR3 | LC3619Y | BR3 | | Y | | |



| | | | | | | | |
|---------|---------|------------|-----|-----|----|-----|--|
| BROTHER | PCB-BR3 | LC3719BK | BR3 | --- | BK | ME | Brother MFC-J2330DW/J3930DW |
| BROTHER | PCB-BR3 | LC3719C | BR3 | | C | | |
| BROTHER | PCB-BR3 | LC3719M | BR3 | | M | | |
| BROTHER | PCB-BR3 | LC3719Y | BR3 | | Y | | |
| BROTHER | PCB-BR3 | LC3011BK | BR3 | --- | BK | USA | Brother MFC-J491DW/ J497DW/J690DW/J895DW |
| BROTHER | PCB-BR3 | LC3011C | BR3 | | C | | |
| BROTHER | PCB-BR3 | LC3011M | BR3 | | M | | |
| BROTHER | PCB-BR3 | LC3011Y | BR3 | | Y | | |
| BROTHER | PCB-BR3 | LC3013BK | BR3 | | BK | | |
| BROTHER | PCB-BR3 | LC3013C | BR3 | | C | | |
| BROTHER | PCB-BR3 | LC3013M | BR3 | | M | | |
| BROTHER | PCB-BR3 | LC3013Y | BR3 | | Y | | |
| BROTHER | PCB-BR3 | LC3111BK | BR3 | --- | BK | JPN | Brother DCP-J972N/J973N-W/B/ J978N572N/J577N/J982N-B/W/- J582N/MFC-J893N/J898N/J998DN/ DWN/J738DN/J903N |
| BROTHER | PCB-BR3 | LC3111C | BR3 | | C | | |
| BROTHER | PCB-BR3 | LC3111M | BR3 | | M | | |
| BROTHER | PCB-BR3 | LC3111Y | BR3 | | Y | | |
| BROTHER | PCB-BR3 | LC3211BK | BR3 | --- | BK | EUR | Brother MFC-J890DW/J895DW/ DCP-J772DW/J774DW |
| BROTHER | PCB-BR3 | LC3211C | BR3 | | C | | |
| BROTHER | PCB-BR3 | LC3211M | BR3 | | M | | |
| BROTHER | PCB-BR3 | LC3211Y | BR3 | | Y | | |
| BROTHER | PCB-BR3 | LC3311BK | BR3 | --- | BK | AUS | Brother DCP-J772DW/MFC- J491DW/J890DW |
| BROTHER | PCB-BR3 | LC3311C | BR3 | | C | | |
| BROTHER | PCB-BR3 | LC3311M | BR3 | | M | | |
| BROTHER | PCB-BR3 | LC3311Y | BR3 | | Y | | |
| BROTHER | PCB-BR3 | LC3313BK | BR3 | | BK | | |
| BROTHER | PCB-BR3 | LC3313C | BR3 | | C | | |
| BROTHER | PCB-BR3 | LC3313M | BR3 | | M | | |
| BROTHER | PCB-BR3 | LC3313Y | BR3 | | Y | | |
| BROTHER | PCB-BR3 | LC3511BK | BR3 | --- | BK | AP | Brother MFC-J690DW/J890DW |
| BROTHER | PCB-BR3 | LC3511C | BR3 | | C | | |
| BROTHER | PCB-BR3 | LC3511M | BR3 | | M | | |
| BROTHER | PCB-BR3 | LC3511Y | BR3 | | Y | | |
| BROTHER | PCB-BR3 | LC3513BK | BR3 | | BK | | |
| BROTHER | PCB-BR3 | LC3513C | BR3 | | C | | |
| BROTHER | PCB-BR3 | LC3513M | BR3 | | M | | |
| BROTHER | PCB-BR3 | LC3513Y | BR3 | | Y | | |
| BROTHER | PCB-BR3 | LC3717BK | BR3 | --- | BK | ME | Brother MFC-J2330DW/J3930DW |
| BROTHER | PCB-BR3 | LC3717C | BR3 | | C | | |
| BROTHER | PCB-BR3 | LC3717M | BR3 | | M | | |
| BROTHER | PCB-BR3 | LC3717Y | BR3 | | Y | | |
| BROTHER | PCB-BR3 | LC3017BK-N | BR3 | --- | BK | USA | Brother MFC-J5330DW/J6530DW/ |



| | | | | | | | |
|---------|---------|------------|-----|-----|----|-----|---|
| BROTHER | PCB-BR3 | LC3017C-N | BR3 | | C | | J6930DW/J6730DW |
| BROTHER | PCB-BR3 | LC3017M-N | BR3 | | M | | |
| BROTHER | PCB-BR3 | LC3017Y-N | BR3 | | Y | | |
| BROTHER | PCB-BR3 | LC3019BK-N | BR3 | | BK | | |
| BROTHER | PCB-BR3 | LC3019C-N | BR3 | | C | | |
| BROTHER | PCB-BR3 | LC3019M-N | BR3 | | M | | |
| BROTHER | PCB-BR3 | LC3019Y-N | BR3 | | Y | | |
| BROTHER | PCB-BR3 | LC3029BK-N | BR3 | | BK | | |
| BROTHER | PCB-BR3 | LC3029C-N | BR3 | --- | C | USA | Brother MFC-J5830DW/J5830DW XL/ J6535DW/J6535DW XL/ J5930DW/J6935DW |
| BROTHER | PCB-BR3 | LC3029M-N | BR3 | | M | | |
| BROTHER | PCB-BR3 | LC3029Y-N | BR3 | | Y | | |
| BROTHER | PCB-BR3 | LC3117BK-N | BR3 | | BK | | |
| BROTHER | PCB-BR3 | LC3117C-N | BR3 | | C | | |
| BROTHER | PCB-BR3 | LC3117M-N | BR3 | | M | | |
| BROTHER | PCB-BR3 | LC3117Y-N | BR3 | --- | Y | JPN | Brother MFC-J6980CDW/J6580CDW |
| BROTHER | PCB-BR3 | LC3119BK-N | BR3 | | BK | | |
| BROTHER | PCB-BR3 | LC3119C-N | BR3 | | C | | |
| BROTHER | PCB-BR3 | LC3119M-N | BR3 | | M | | |
| BROTHER | PCB-BR3 | LC3119Y-N | BR3 | | Y | | |
| BROTHER | PCB-BR3 | LC3129BK-N | BR3 | | BK | | |
| BROTHER | PCB-BR3 | LC3129C-N | BR3 | --- | C | JPN | Brother MFC-J6995CDW |
| BROTHER | PCB-BR3 | LC3129M-N | BR3 | | M | | |
| BROTHER | PCB-BR3 | LC3129Y-N | BR3 | | Y | | |
| BROTHER | PCB-BR3 | LC3213BK-N | BR3 | | BK | | |
| BROTHER | PCB-BR3 | LC3213C-N | BR3 | --- | C | EUR | Brother MFC-J890DW/J895DW/ DCP-J772DW/J774DW |
| BROTHER | PCB-BR3 | LC3213M-N | BR3 | | M | | |
| BROTHER | PCB-BR3 | LC3213Y-N | BR3 | | Y | | |
| BROTHER | PCB-BR3 | LC3217BK-N | BR3 | | BK | | |
| BROTHER | PCB-BR3 | LC3217C-N | BR3 | | C | | |
| BROTHER | PCB-BR3 | LC3217M-N | BR3 | | M | | |
| BROTHER | PCB-BR3 | LC3217Y-N | BR3 | --- | Y | EUR | Brother MFC-J5330DW/J5335DW/ J5730DW/J5930DW/J6530DW/ J6930DW/J6935DW |
| BROTHER | PCB-BR3 | LC3219BK-N | BR3 | | BK | | |
| BROTHER | PCB-BR3 | LC3219C-N | BR3 | | C | | |
| BROTHER | PCB-BR3 | LC3219M-N | BR3 | | M | | |
| BROTHER | PCB-BR3 | LC3219Y-N | BR3 | | Y | | |
| BROTHER | PCB-BR3 | LC3317BK-N | BR3 | | BK | | |
| BROTHER | PCB-BR3 | LC3317C-N | BR3 | | C | | |
| BROTHER | PCB-BR3 | LC3317M-N | BR3 | --- | M | AUS | Brother MFC-J5330DW/J5730DW/ J6530DW/J6930DW/J6730DW |
| BROTHER | PCB-BR3 | LC3317Y-N | BR3 | | Y | | |
| BROTHER | PCB-BR3 | LC3319BK-N | BR3 | | BK | | |
| BROTHER | PCB-BR3 | LC3319C-N | BR3 | | C | | |



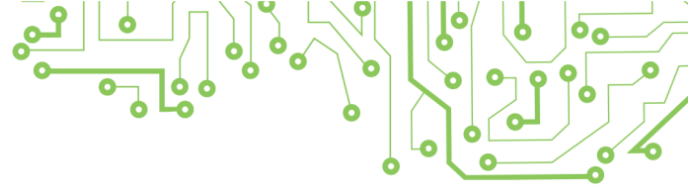
| | | | | | | | |
|---------|---------|------------|-----|-----|-----|-----|--|
| BROTHER | PCB-BR3 | LC3319M-N | BR3 | | M | | |
| BROTHER | PCB-BR3 | LC3319Y-N | BR3 | | Y | | |
| BROTHER | PCB-BR3 | LC3329BK-N | BR3 | --- | BK | AUS | Brother MFC-J5930DW/J6935DW |
| BROTHER | PCB-BR3 | LC3329C-N | BR3 | | C | | |
| BROTHER | PCB-BR3 | LC3329M-N | BR3 | | M | | |
| BROTHER | PCB-BR3 | LC3329Y-N | BR3 | | Y | | |
| BROTHER | PCB-BR3 | LC3617BK-N | BR3 | | BK | | |
| BROTHER | PCB-BR3 | LC3617C-N | BR3 | --- | C | AP | Brother MFC-J2330DW/J2730DW/ J3530DW/J3930DW |
| BROTHER | PCB-BR3 | LC3617M-N | BR3 | | M | | |
| BROTHER | PCB-BR3 | LC3617Y-N | BR3 | | Y | | |
| BROTHER | PCB-BR3 | LC3619BK-N | BR3 | | BK | | |
| BROTHER | PCB-BR3 | LC3619C-N | BR3 | | C | | |
| BROTHER | PCB-BR3 | LC3619M-N | BR3 | | M | | |
| BROTHER | PCB-BR3 | LC3619Y-N | BR3 | | Y | | |
| BROTHER | PCB-BR3 | LC3719BK-N | BR3 | | --- | | |
| BROTHER | PCB-BR3 | LC3719C-N | BR3 | C | | | |
| BROTHER | PCB-BR3 | LC3719M-N | BR3 | M | | | |
| BROTHER | PCB-BR3 | LC3719Y-N | BR3 | Y | | | |
| BROTHER | PCB-BR3 | LC3011BK-N | BR3 | --- | BK | USA | Brother MFC-J491DW/J497DW/ J690DW/J895DW |
| BROTHER | PCB-BR3 | LC3011C-N | BR3 | | C | | |
| BROTHER | PCB-BR3 | LC3011M-N | BR3 | | M | | |
| BROTHER | PCB-BR3 | LC3011Y-N | BR3 | | Y | | |
| BROTHER | PCB-BR3 | LC3013BK-N | BR3 | | BK | | |
| BROTHER | PCB-BR3 | LC3013C-N | BR3 | | C | | |
| BROTHER | PCB-BR3 | LC3013M-N | BR3 | | M | | |
| BROTHER | PCB-BR3 | LC3013Y-N | BR3 | | Y | | |
| BROTHER | PCB-BR3 | LC3111BK-N | BR3 | --- | BK | JPN | Brother DCP-J972N/DCP-J973N- W/B/J978N572N/J577N/J982N- B/W/-J582N/MFC-J893N/J898N/ J998DN/DWN/J738DN/J903N |
| BROTHER | PCB-BR3 | LC3111C-N | BR3 | | C | | |
| BROTHER | PCB-BR3 | LC3111M-N | BR3 | | M | | |
| BROTHER | PCB-BR3 | LC3111Y-N | BR3 | | Y | | |
| BROTHER | PCB-BR3 | LC3211BK-N | BR3 | --- | BK | EUR | Brother MFC-J890DW/J895DW/ DCP-J772DW/J774DW |
| BROTHER | PCB-BR3 | LC3211C-N | BR3 | | C | | |
| BROTHER | PCB-BR3 | LC3211M-N | BR3 | | M | | |
| BROTHER | PCB-BR3 | LC3211Y-N | BR3 | | Y | | |
| BROTHER | PCB-BR3 | LC3311BK-N | BR3 | --- | BK | AUS | Brother DCP-J772DW/MFC- J491DW/J890DW |
| BROTHER | PCB-BR3 | LC3311C-N | BR3 | | C | | |
| BROTHER | PCB-BR3 | LC3311M-N | BR3 | | M | | |
| BROTHER | PCB-BR3 | LC3311Y-N | BR3 | | Y | | |
| BROTHER | PCB-BR3 | LC3313BK-N | BR3 | | BK | | |
| BROTHER | PCB-BR3 | LC3313C-N | BR3 | | C | | |
| BROTHER | PCB-BR3 | LC3313M-N | BR3 | | M | | |



| | | | | | | | |
|---------|---------|------------|-----|-------|-----|-----|---|
| BROTHER | PCB-BR3 | LC3313Y-N | BR3 | | Y | | |
| BROTHER | PCB-BR3 | LC3511BK-N | BR3 | --- | BK | AP | Brother MFC-J690DW/J890DW |
| BROTHER | PCB-BR3 | LC3511C-N | BR3 | | C | | |
| BROTHER | PCB-BR3 | LC3511M-N | BR3 | | M | | |
| BROTHER | PCB-BR3 | LC3511Y-N | BR3 | | Y | | |
| BROTHER | PCB-BR3 | LC3513BK-N | BR3 | | BK | | |
| BROTHER | PCB-BR3 | LC3513C-N | BR3 | | C | | |
| BROTHER | PCB-BR3 | LC3513M-N | BR3 | | M | | |
| BROTHER | PCB-BR3 | LC3513Y-N | BR3 | | Y | | |
| BROTHER | PCB-BR3 | LC3717BK-N | BR3 | | --- | | |
| BROTHER | PCB-BR3 | LC3717C-N | BR3 | C | | | |
| BROTHER | PCB-BR3 | LC3717M-N | BR3 | M | | | |
| BROTHER | PCB-BR3 | LC3717Y-N | BR3 | Y | | | |
| BROTHER | PCB-BR3 | LC3017BK-S | BR3 | Start | BK | USA | Brother MFC-J5330DW/J6530DW/ J6930DW/J6730DW |
| BROTHER | PCB-BR3 | LC3017C-S | BR3 | | C | | |
| BROTHER | PCB-BR3 | LC3017M-S | BR3 | | M | | |
| BROTHER | PCB-BR3 | LC3017Y-S | BR3 | | Y | | |
| BROTHER | PCB-BR3 | LC3029BK-S | BR3 | Start | BK | USA | Brother MFC-J5830DW/J5830DW XL/ J6535DW/J6535DW XL/ J5930DW/J6935DW |
| BROTHER | PCB-BR3 | LC3029C-S | BR3 | | C | | |
| BROTHER | PCB-BR3 | LC3029M-S | BR3 | | M | | |
| BROTHER | PCB-BR3 | LC3029Y-S | BR3 | | Y | | |
| BROTHER | PCB-BR3 | LC3117BK-S | BR3 | Start | BK | JPN | Brother MFC-J6980CDW/J6580CDW |
| BROTHER | PCB-BR3 | LC3117C-S | BR3 | | C | | |
| BROTHER | PCB-BR3 | LC3117M-S | BR3 | | M | | |
| BROTHER | PCB-BR3 | LC3117Y-S | BR3 | | Y | | |
| BROTHER | PCB-BR3 | LC3129BK-S | BR3 | Start | BK | JPN | Brother MFC-J6995CDW |
| BROTHER | PCB-BR3 | LC3129C-S | BR3 | | C | | |
| BROTHER | PCB-BR3 | LC3129M-S | BR3 | | M | | |
| BROTHER | PCB-BR3 | LC3129Y-S | BR3 | | Y | | |
| BROTHER | PCB-BR3 | LC3217BK-S | BR3 | Start | BK | EUR | Brother MFC-J5330DW/J5335DW/ J5730DW/J5930DW/J6530DW/ J6930DW/J6935DW |
| BROTHER | PCB-BR3 | LC3217C-S | BR3 | | C | | |
| BROTHER | PCB-BR3 | LC3217M-S | BR3 | | M | | |
| BROTHER | PCB-BR3 | LC3217Y-S | BR3 | | Y | | |
| BROTHER | PCB-BR3 | LC3219BK-S | BR3 | | BK | | |
| BROTHER | PCB-BR3 | LC3219C-S | BR3 | | C | | |
| BROTHER | PCB-BR3 | LC3219M-S | BR3 | | M | | |
| BROTHER | PCB-BR3 | LC3219Y-S | BR3 | | Y | | |
| BROTHER | PCB-BR3 | LC3011BK-S | BR3 | Start | BK | USA | Brother MFC-J491DW/J497DW/ J690DW/J895DW |
| BROTHER | PCB-BR3 | LC3011C-S | BR3 | | C | | |
| BROTHER | PCB-BR3 | LC3011M-S | BR3 | | M | | |
| BROTHER | PCB-BR3 | LC3011Y-S | BR3 | | Y | | |

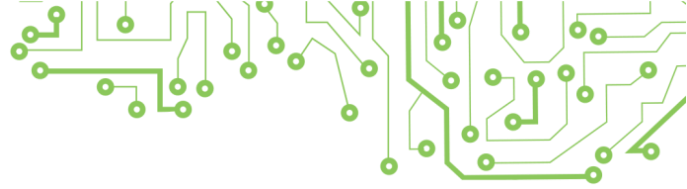


| | | | | | | | |
|---------|---------|--------------|-----|-------|----|-----|--|
| BROTHER | PCB-BR3 | LC3111BK-S | BR3 | Start | BK | JPN | Brother DCP-J972N/DCP-J973N-W/B/J978N572N/J577N/J982N-B/W/-J582N/MFC-J893N/J898N/J998DN/DWN/J738DN/J903N |
| BROTHER | PCB-BR3 | LC3111C-S | BR3 | | C | | |
| BROTHER | PCB-BR3 | LC3111M-S | BR3 | | M | | |
| BROTHER | PCB-BR3 | LC3111Y-S | BR3 | | Y | | |
| BROTHER | PCB-BR3 | LC3211BK-S | BR3 | Start | BK | EUR | Brother MFC-J890DW/J895DW/DCP-J772DW/J774DW |
| BROTHER | PCB-BR3 | LC3211C-S | BR3 | | C | | |
| BROTHER | PCB-BR3 | LC3211M-S | BR3 | | M | | |
| BROTHER | PCB-BR3 | LC3211Y-S | BR3 | | Y | | |
| BROTHER | PCB-BR3 | LC3219BK-S | BR3 | Start | BK | EUR | Brother MFC-J5330DW/J5335DW/J5730DW/J5930DW/J6530DW/J6930DW/J6935DW |
| BROTHER | PCB-BR3 | LC3219C-S | BR3 | | C | | |
| BROTHER | PCB-BR3 | LC3219M-S | BR3 | | M | | |
| BROTHER | PCB-BR3 | LC3219Y-S | BR3 | | Y | | |
| BROTHER | PCB-BR3 | LC3311BK-S | BR3 | Start | BK | AUS | Brother DCP-J772DW/MFC-J491DW/J890DW |
| BROTHER | PCB-BR3 | LC3311C-S | BR3 | | C | | |
| BROTHER | PCB-BR3 | LC3311M-S | BR3 | | M | | |
| BROTHER | PCB-BR3 | LC3311Y-S | BR3 | | Y | | |
| BROTHER | PCB-BR3 | LC3511BK-S | BR3 | Start | BK | AP | Brother MFC-J690DW/J890DW |
| BROTHER | PCB-BR3 | LC3511C-S | BR3 | | C | | |
| BROTHER | PCB-BR3 | LC3511M-S | BR3 | | M | | |
| BROTHER | PCB-BR3 | LC3511Y-S | BR3 | | Y | | |
| BROTHER | PCB-BR3 | LC3717BK-S | BR3 | Start | BK | ME | Brother MFC-J2330DW/J3930DW |
| BROTHER | PCB-BR3 | LC3717C-S | BR3 | | C | | |
| BROTHER | PCB-BR3 | LC3717M-S | BR3 | | M | | |
| BROTHER | PCB-BR3 | LC3717Y-S | BR3 | | Y | | |
| BROTHER | PCB-BR3 | LC3017BK-N-S | BR3 | Start | BK | USA | Brother MFC-J5330DW/J6530DW/J6930DW/J6730DW |
| BROTHER | PCB-BR3 | LC3017C-N-S | BR3 | | C | | |
| BROTHER | PCB-BR3 | LC3017M-N-S | BR3 | | M | | |
| BROTHER | PCB-BR3 | LC3017Y-N-S | BR3 | | Y | | |
| BROTHER | PCB-BR3 | LC3029BK-N-S | BR3 | Start | BK | USA | Brother MFC-J5830DW/J5830DW XL/J6535DW/J6535DW XL/J5930DW/J6935DW |
| BROTHER | PCB-BR3 | LC3029C-N-S | BR3 | | C | | |
| BROTHER | PCB-BR3 | LC3029M-N-S | BR3 | | M | | |
| BROTHER | PCB-BR3 | LC3029Y-N-S | BR3 | | Y | | |
| BROTHER | PCB-BR3 | LC3117BK-N-S | BR3 | Start | BK | JPN | Brother MFC-J6980CDW/J6580CDW |
| BROTHER | PCB-BR3 | LC3117C-N-S | BR3 | | C | | |
| BROTHER | PCB-BR3 | LC3117M-N-S | BR3 | | M | | |
| BROTHER | PCB-BR3 | LC3117Y-N-S | BR3 | | Y | | |
| BROTHER | PCB-BR3 | LC3129BK-N-S | BR3 | Start | BK | JPN | Brother MFC-J6995CDW |
| BROTHER | PCB-BR3 | LC3129C-N-S | BR3 | | C | | |
| BROTHER | PCB-BR3 | LC3129M-N-S | BR3 | | M | | |
| BROTHER | PCB-BR3 | LC3129Y-N-S | BR3 | | Y | | |
| BROTHER | PCB-BR3 | LC3217BK-N-S | BR3 | Start | BK | EUR | Brother MFC-J5330DW/J5335DW/ |



| | | | | | | | |
|---------|---------|--------------|-----|-------|----|-----|--|
| BROTHER | PCB-BR3 | LC3217C-N-S | BR3 | | C | | J5730DW/J5930DW/J6530DW/ J6930DW/J6935DW |
| BROTHER | PCB-BR3 | LC3217M-N-S | BR3 | | M | | |
| BROTHER | PCB-BR3 | LC3217Y-N-S | BR3 | | Y | | |
| BROTHER | PCB-BR3 | LC3219BK-N-S | BR3 | | BK | | |
| BROTHER | PCB-BR3 | LC3219C-N-S | BR3 | | C | | |
| BROTHER | PCB-BR3 | LC3219M-N-S | BR3 | | M | | |
| BROTHER | PCB-BR3 | LC3219Y-N-S | BR3 | | Y | | |
| BROTHER | PCB-BR3 | LC3011BK-N-S | BR3 | Start | BK | USA | Brother MFC-J491DW/J497DW/ J690DW/J895DW |
| BROTHER | PCB-BR3 | LC3011C-N-S | BR3 | | C | | |
| BROTHER | PCB-BR3 | LC3011M-N-S | BR3 | | M | | |
| BROTHER | PCB-BR3 | LC3011Y-N-S | BR3 | | Y | | |
| BROTHER | PCB-BR3 | LC3111BK-N-S | BR3 | Start | BK | JPN | Brother DCP-J972N/DCP-J973N- W/B/J978N572N/J577N/J982N- B/W/-J582N/MFC-J893N/J898N/ J998DN/DWN/J738DN/J903N |
| BROTHER | PCB-BR3 | LC3111C-N-S | BR3 | | C | | |
| BROTHER | PCB-BR3 | LC3111M-N-S | BR3 | | M | | |
| BROTHER | PCB-BR3 | LC3111Y-N-S | BR3 | | Y | | |
| BROTHER | PCB-BR3 | LC3211BK-N-S | BR3 | Start | BK | EUR | Brother MFC-J890DW/J895DW/ DCP-J772DW/J774DW |
| BROTHER | PCB-BR3 | LC3211C-N-S | BR3 | | C | | |
| BROTHER | PCB-BR3 | LC3211M-N-S | BR3 | | M | | |
| BROTHER | PCB-BR3 | LC3211Y-N-S | BR3 | | Y | | |
| BROTHER | PCB-BR3 | LC3219BK-N-S | BR3 | Start | BK | EUR | Brother MFC-J5330DW/J5335DW/ J5730DW/J5930DW/J6530DW/ J6930DW/J6935DW |
| BROTHER | PCB-BR3 | LC3219C-N-S | BR3 | | C | | |
| BROTHER | PCB-BR3 | LC3219M-N-S | BR3 | | M | | |
| BROTHER | PCB-BR3 | LC3219Y-N-S | BR3 | | Y | | |
| BROTHER | PCB-BR3 | LC3311BK-N-S | BR3 | Start | BK | AUS | Brother DCP-J772DW/MFC- J491DW/J890DW |
| BROTHER | PCB-BR3 | LC3311C-N-S | BR3 | | C | | |
| BROTHER | PCB-BR3 | LC3311M-N-S | BR3 | | M | | |
| BROTHER | PCB-BR3 | LC3311Y-N-S | BR3 | | Y | | |
| BROTHER | PCB-BR3 | LC3511BK-N-S | BR3 | Start | BK | AP | Brother MFC-J690DW/J890DW |
| BROTHER | PCB-BR3 | LC3511C-N-S | BR3 | | C | | |
| BROTHER | PCB-BR3 | LC3511M-N-S | BR3 | | M | | |
| BROTHER | PCB-BR3 | LC3511Y-N-S | BR3 | | Y | | |
| BROTHER | PCB-BR3 | LC3717BK-N-S | BR3 | Start | BK | ME | Brother MFC-J2330DW/J3930DW |
| BROTHER | PCB-BR3 | LC3717C-N-S | BR3 | | C | | |
| BROTHER | PCB-BR3 | LC3717M-N-S | BR3 | | M | | |
| BROTHER | PCB-BR3 | LC3717Y-N-S | BR3 | | Y | | |

6. Operations to Confirm the Updated Version



When the device has been updated, please enter the Settings-Version interface to confirm the updated version by below steps (find the appendix in Unismart 3 Device for reference)

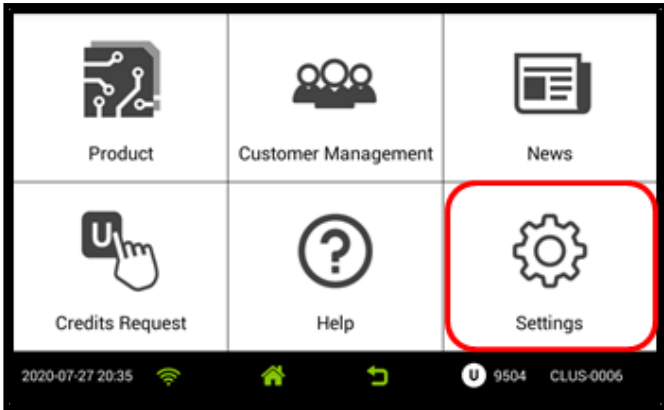


Figure 1

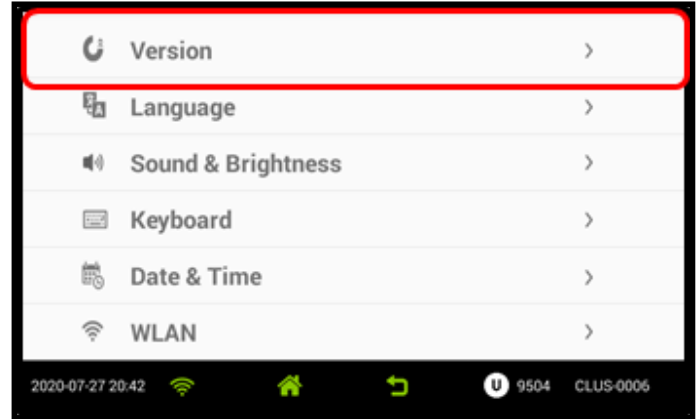


Figure 2

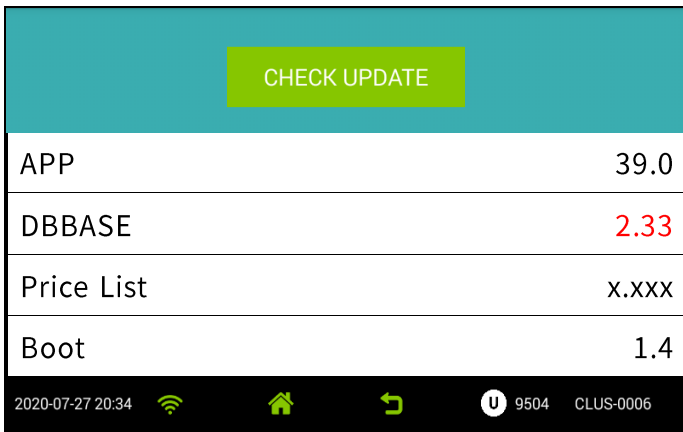


Figure 3 Versions without JIG connecting

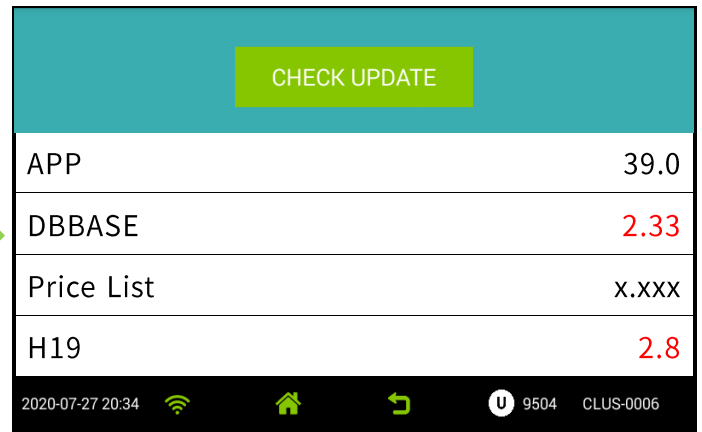


Figure 4 Versions with JIG connecting

Version list for the device & JIG (click DBBASE to check)

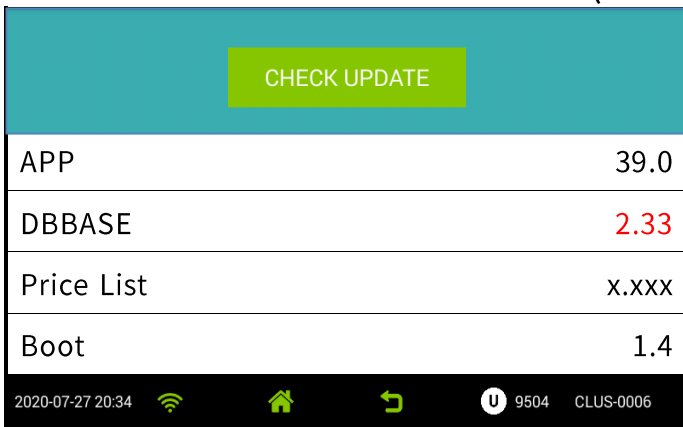


Figure 5

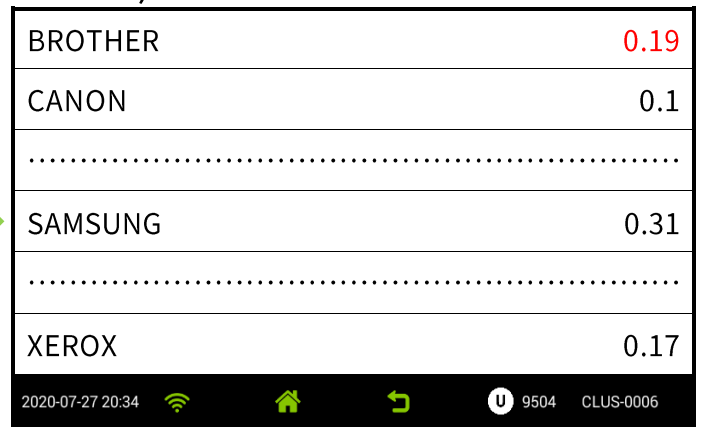
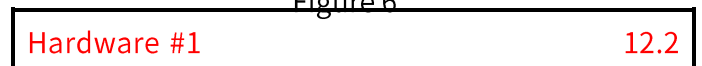
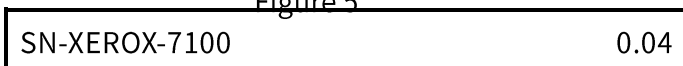
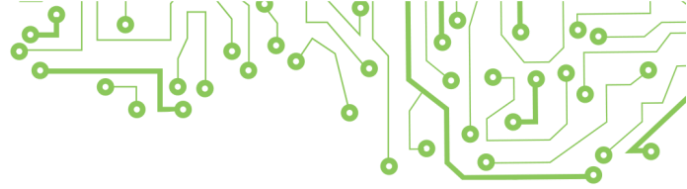


Figure 6





| | |
|-------------|------|
| TALLY | 0.03 |
| TOSHIBA | 0.03 |
| UTAX | 0.03 |
| VersionInfo | 2.33 |
| XEROX | 0.17 |

2020-07-27 20:34 [Wi-Fi] [Home] [Back] [U] 9504 CLUS-0006

Figure 7

| | |
|-------|-----|
| | |
| BR3 | 2.8 |
| C | 1 |
| | |
| ST2 | 4.7 |

2020-07-27 20:34 [Wi-Fi] [Home] [Back] [U] 9504 CLUS-0006

Figure 8

“Apex” herein refers to Apex Microelectronics Co., Ltd. The information contained herein is subject to change without prior notification. Apex shall not be liable for technical or editorial errors or omissions contained herein. Photographed products may not always match the description.