

Uni HP V5 Apex Chip Upgrade
Operating Instruction
V1.0

Contents

1. Features 2

2. HP V5 Series Blank Chip and JIG 2

3. Operating Procedure..... 2

4. Notices 4

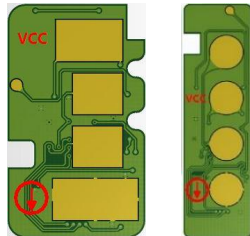
5. Code Hinting and Meanings 4

6. Model List..... 5

1. Features

Upgrade the Apex chip firmware, reset for the Apex blank and finished chips in model, color, yield and region.

2. HP V5 Series Chip and JIG




Chip



JIG

3. Operating Procedure

Apex Reset & Apex Check & Apex Scan

1. Click  in the main interface to browse the printer brands by scrolling the screen.
2. Click the desired printer brand or find it by the SEARCH function as figure 2, and enter its secondary interface.
3. Key in "1003" as the red square in figure 3.
4. Click the "Printer" icon as the orange square to check the applicable printer models as figure 4.
5. Click "W1003AC/103A" as the blue square in figure 3 to enter the final interface as figure 5.

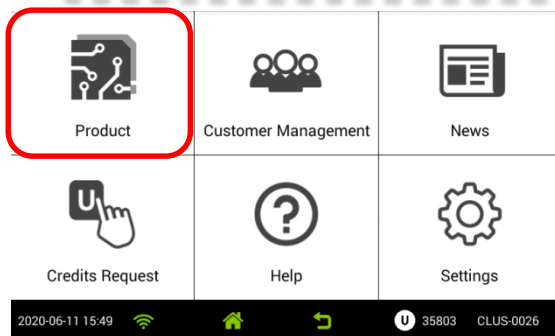


Figure 1

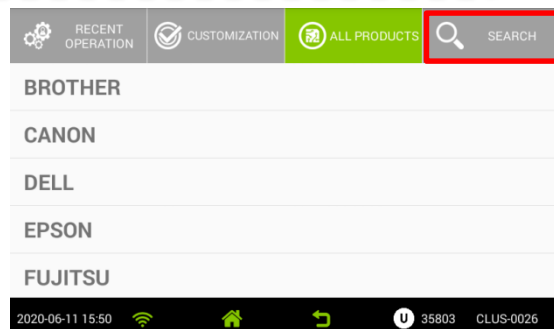


Figure 2



Figure 3

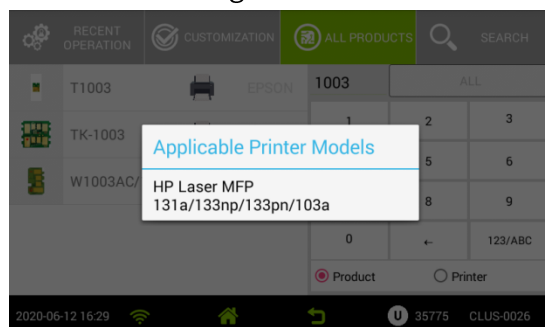


Figure 4

Press confirm button on the JIG or the Unismart device to carry out the operation.

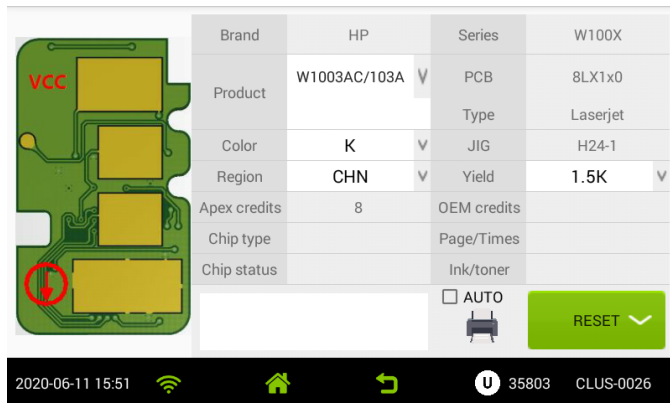
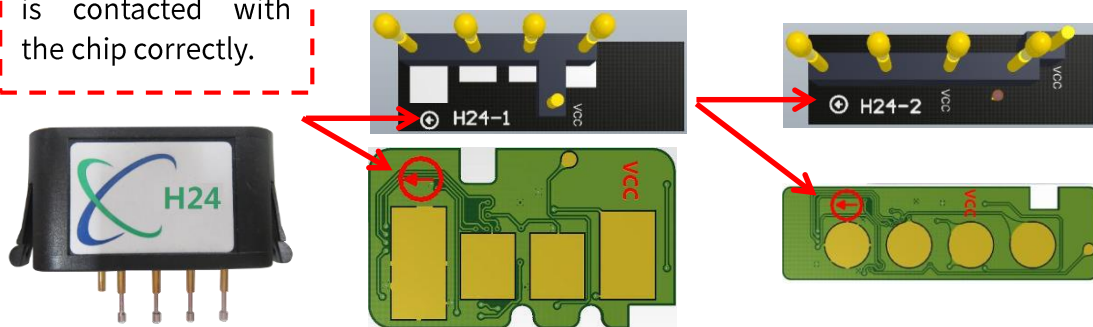


Figure 5

Ensure the test head is contacted with the chip correctly.



After the chip is successfully reset, you can click to switch functions "CHECK" and "SCAN", and press the "Confirm" button on the JIG or Unismart device to carry out the chip operation.

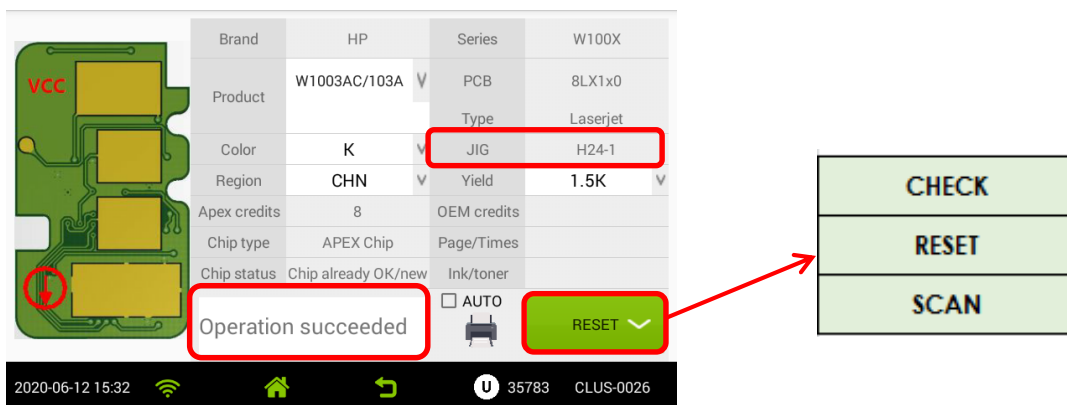



Figure 6

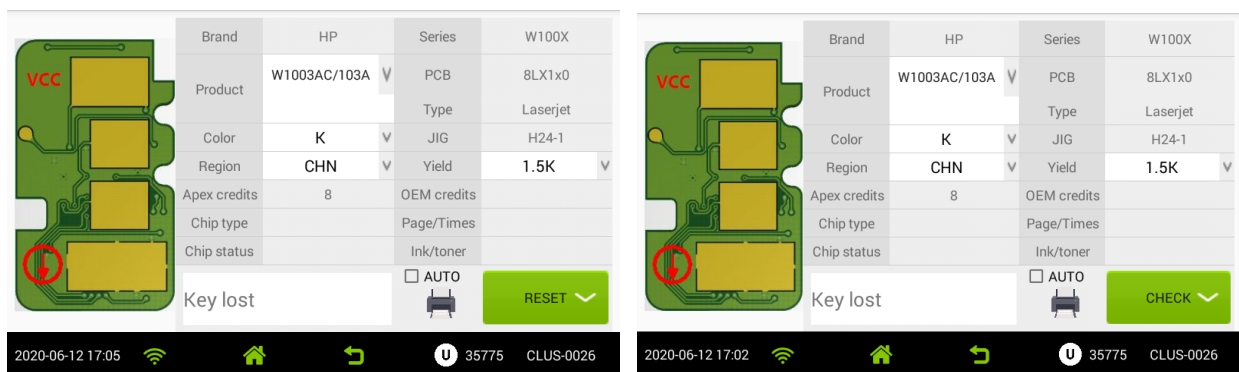
Notes:

- ◆ Using  button to scan and check the chip information can only be realized in the main interface and final interface.
- ◆ The operation procedure above is for W1003AC reset and it can also be applied to other PCB.

4. Notices

- ◆ JIG H24 is divided into two types by its contactors' layout, naming as H24-1 and H24-2, please use the dedicated JIG as prompted in the device.
- ◆ Ensure the JIG contacting the chip in the right direction as remarked during operation.
- ◆ It will not deduct points for brand new chip upgrading, however resetting the installed old version chip and brand new chip will consume credits.
- ◆ It can only reset chips when the device is connected with network successfully.
- ◆ Because of the electrical characteristics of chips, anomalies of battery-powered may lead to Key lost, causing by static or JIG contacts the chip in wrong direction. It happens to chip resetting and upgrading, which is shown as below figures, please do not worry.

(In case “Key lost” pops up in the device, please gather the involved chips and contact your sales manager to deal with them.)



5. Code Hinting and Meanings

Coding Hinting	Meaning	Analysis
Chip Already OK	Chip Already OK	/
Operation failed	Operation failed	①The chip is damaged. ②The JIG's probe does not align the contactors on the chip.

APEX Chip Reset Operating Instruction



		③The JIG is placed in the opposite direction.
Operation succeeded	Operation succeeded	/
SUCCESS (Upgrade)	Chip is successfully upgraded	/
Need to Upgrade	Chip needs to be upgraded	/
Key lost	Key lost	It is Influenced by static or the JIG contacts the chip in wrong direction, causing the battery-powered fails to save the Key.
Chip not match	Chip doesn't match	The chip that needs to be reset cannot select the current model.
Data not match	Data not match	①The chip is installed and its data is rewritten by the printer. ②The detected chip model doesn't match with the selected model on the Unismart device.
Chip is locked	Chip is locked	/
Chip's useful life is over	Chip's useful life is over	/
Brand new chip	Brand new chip	/
No chip detected	No chip detected	/
Wrong JIG ID	Wrong JIG ID	/
Not found JIG	Not found JIG	/

6. Model List

PCB Code	JIG	Brand	OEM Code	Color	Yield	Region	For use in Printer
8LX150	H24-1	HP	W1003AC/103A	K	1.5K	CHN	HP Laser MFP 131a/133np/133pn/103a
8LX150	H24-1	HP	W1004AC/104A	K	1.5K	IND	
8LX150	H24-1	HP	W1105A/105A	K	1K	LA	HP Laser MFP 135a/135w/137fnw/107a/107w
8LX150	H24-1	HP	W1106A/106A	K	1K	EMEA	
8LX150	H24-1	HP	W1107A/107A	K	1K	APJ (ex. CHN/IND)	
8LX150	H24-1	HP	W1110A/110A	K	1.5K	CHN	HP Laser MFP 136w/136a/136nw/ 138pn/138pnw/138p/108a/108w
8LX150	H24-1	HP	W1112A/110A	K	1.5K	IND	
8LX250	H24-2	HP	W2060A/116A	K	1K	AMS	HP Color Laser MFP 179fnw/178nw/150a/150w/150nw
8LX250	H24-2	HP	W2061A/116A	C	0.7K		
8LX250	H24-2	HP	W2062A/116A	Y	0.7K		
8LX250	H24-2	HP	W2063A/116A	M	0.7K		
8LX250	H24-2	HP	W2070A/117A	K	1K	EMEA	
8LX250	H24-2	HP	W2071A/117A	C	0.7K		

APEX Chip Reset Operating Instruction



8LX250	H24-2	HP	W2072A/117A	Y	0.7K		
8LX250	H24-2	HP	W2073A/117A	M	0.7K		
8LX250	H24-2	HP	W2080A/118A	K	1K	CHN	
8LX250	H24-2	HP	W2081A/118A	C	0.7K		
8LX250	H24-2	HP	W2082A/118A	Y	0.7K		
8LX250	H24-2	HP	W2083A/118A	M	0.7K		
8LX250	H24-2	HP	W2090A/119A	K	1K		
8LX250	H24-2	HP	W2091A/119A	C	0.7K	APJ (ex. CHN)	
8LX250	H24-2	HP	W2092A/119A	Y	0.7K		
8LX250	H24-2	HP	W2093A/119A	M	0.7K		
8LX150	H24-1	Samsung	MLT-K200S	K	1K	DOM	Samsung SL-M2030/M2035/2035w/2085
8LX150	H24-1	Samsung	MLT-K200L	K	1.5K		Samsung SL-C515/C565FW
8LX250	H24-2	Samsung	CLT-515SK	K	1.5K		
8LX250	H24-2	Samsung	CLT-515SC	C	1K		
8LX250	H24-2	Samsung	CLT-515SM	M	1K		
8LX250	H24-2	Samsung	CLT-515SY	Y	1K		
8LX250	H24-2	Samsung	CLT-510SK	K	1.5K		SamsungSL-C510/C510W/C513/ C513W/C563FW/C563WSL-C510/ C510W/C513/C513W/C563FW/ C563W
8LX250	H24-2	Samsung	CLT-510SC	C	1K		
8LX250	H24-2	Samsung	CLT-510SM	M	1K		
8LX250	H24-2	Samsung	CLT-510SY	Y	1K		

"Apex" herein refers to Apex Microelectronics Co., Ltd. The information contained herein is subject to change without prior notification. Apex shall not be liable for technical or editorial errors or omissions contained herein. Photographed products may not always match the description.

© 2020 APEX MICROELECTRONICS CO., LTD. ALL RIGHTS RESERVED.

All brand names & trademarks are properties of other respective holders and used for descriptive purposes only.