



Product Update Notification


Unismart 3 DBBASE V1.97

Date: Sep 2020

1. Unismart 3 Device

Item	Before	After
APP	<V23.0	V23.0
DBBASE	<V1.97	V1.97
HP	0.20	0.22
SHARP		0.05

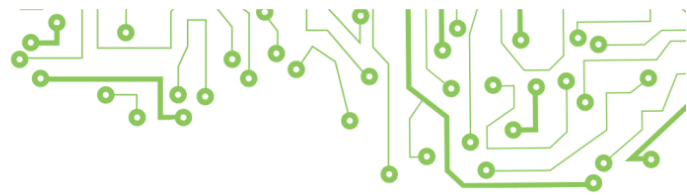
2. Uni-3 New JIG

JIG Code	JIG Picture	Software	Applicable Chips	Apply to
H27		V1.1	APEX Chip (PCB-6MX120)	It is used to reset the APEX chips for SHARP series. SHARP MX B45/MX 61/MX 60/BP GT20

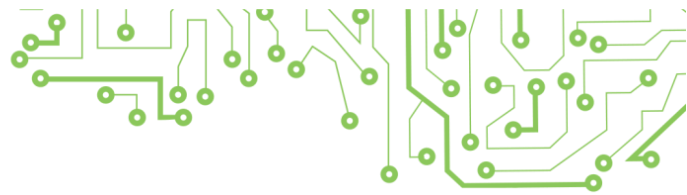
3. Uni-3 New Added Chip List(N/A)

4. Uni-3 New Added Model List

PCB Code	JIG	Brand	OEM Code	Color	Yield	Region	For Use in Printers
PCB-6MX120	H27	SHARP	MX_B45NT	K	30K	USA	Sharp MX-B355W/B455W, MX-B350P, MX-B450P, MX-B350W, MX-B450W
PCB-6MX120	H27	SHARP	MX_B45GT	K	30K	EUR	
PCB-6MX120	H27	SHARP	MX_61NTBA	K	40k	USA	Sharp MX-2651/3051/3551/4051/5051/6051, MX-3071/3571/4071
PCB-6MX120	H27	SHARP	MX_61NTCA	C	24k	USA	
PCB-6MX120	H27	SHARP	MX_61NTMA	M	24k	USA	
PCB-6MX120	H27	SHARP	MX_61NTYA	Y	24k	USA	



PCB-6MX120	H27	SHARP	MX_61FTBA	K	40k	ME	Sharp MX-2651/3051/3551/4051
PCB-6MX120	H27	SHARP	MX_61FTCA	C	24k	ME	
PCB-6MX120	H27	SHARP	MX_61FTMA	M	24k	ME	
PCB-6MX120	H27	SHARP	MX_61FTYA	Y	24k	ME	
PCB-6MX120	H27	SHARP	MX_61GTBA	K	40k	EUR	Sharp MX-2651/3051/3551/4051, MX-3071/3571/4071/6071/5070V/ 6051/5071
PCB-6MX120	H27	SHARP	MX_61GTCA	C	24k	EUR	
PCB-6MX120	H27	SHARP	MX_61GTMA	M	24k	EUR	
PCB-6MX120	H27	SHARP	MX_61GTYA	Y	24k	EUR	
PCB-6MX120	H27	SHARP	MX_60FTBA	K	40k	ME	Sharp MX3070/MX3570/MX5070N/ MX6070N/MX3050N/MX3550N/ MX4050N/MX4070N/MX5050/ MX6050
PCB-6MX120	H27	SHARP	MX_60FTCA	C	24k	ME	
PCB-6MX120	H27	SHARP	MX_60FTMA	M	24k	ME	
PCB-6MX120	H27	SHARP	MX_60FTYA	Y	24k	ME	
PCB-6MX120	H27	SHARP	MX_60NTBA	K	40k	USA	
PCB-6MX120	H27	SHARP	MX_60NTCA	C	24k	USA	
PCB-6MX120	H27	SHARP	MX_60NTMA	M	24k	USA	
PCB-6MX120	H27	SHARP	MX_60NTYA	Y	24k	USA	
PCB-6MX120	H27	SHARP	MX_60GTBA	K	40k	EUR	Sharp MX3050/MX3070/MX3550/ MX3570/MX4050/MX4070/MX5050/ MX5070N/MX6050N/MX6070N
PCB-6MX120	H27	SHARP	MX_60GTCA	C	24k	EUR	
PCB-6MX120	H27	SHARP	MX_60GTMA	M	24k	EUR	
PCB-6MX120	H27	SHARP	MX_60GTYA	Y	24k	EUR	
PCB-6MX120	H27	SHARP	MX_60WWK	K	40k	WW	
PCB-6MX120	H27	SHARP	MX_60WWC	C	24k	WW	
PCB-6MX120	H27	SHARP	MX_60WWM	M	24k	WW	
PCB-6MX120	H27	SHARP	MX_60WWY	Y	24k	WW	
PCB-6MX120	H27	SHARP	BP_GT20BA	K	18K	EUR	Sharp BP 10C20/20C20/20C25
PCB-6MX120	H27	SHARP	BP_GT20CA	C	10K	EUR	
PCB-6MX120	H27	SHARP	BP_GT20MA	M	10K	EUR	
PCB-6MX120	H27	SHARP	BP_GT20YA	Y	10K	EUR	
PCB-K	K	HP	CE410XL-L1	BK	4.7K	WW	HP LaserJet Enterprise 300 Color M351, MFP M375nw, 400 Color M451nw/ M451dn/M451dw, MFP M475dn/ M475dw
PCB-K	K	HP	CE411XL-L1	C	3.7K	WW	
PCB-K	K	HP	CE412XL-L1	Y	3.7K	WW	
PCB-K	K	HP	CE413XL-L1	M	3.7K	WW	
PCB-K	K	HP	CE410XL-L1-N	BK	4.7K	WW	
PCB-K	K	HP	CE411XL-L1-N	C	3.7K	WW	
PCB-K	K	HP	CE412XL-L1-N	Y	3.7K	WW	
PCB-K	K	HP	CE413XL-L1-N	M	3.7K	WW	



PCB-K	K	HP	CF210L-L1	BK	3.2K	WW	HP LaserJet Pro 200 Color M251nw/M276n/nw
PCB-K	K	HP	CF211L-L1	C	2.4K	WW	
PCB-K	K	HP	CF212L-L1	Y	2.4K	WW	
PCB-K	K	HP	CF213L-L1	M	2.4K	WW	
PCB-K	K	HP	CF210L-L1-N	BK	3.2K	WW	
PCB-K	K	HP	CF211L-L1-N	C	2.4K	WW	
PCB-K	K	HP	CF212L-L1-N	Y	2.4K	WW	
PCB-K	K	HP	CF213L-L1-N	M	2.4K	WW	
PCB-K-B	K	HP	CE410XL-L1	BK	4.7K	WW	HP LaserJet Enterprise 300 Color M351, MFP M375nw, 400 Color M451nw/ M451dn/M451dw, MFP M475dn/ M475dw
PCB-K-B	K	HP	CE411XL-L1	C	3.7K	WW	
PCB-K-B	K	HP	CE412XL-L1	Y	3.7K	WW	
PCB-K-B	K	HP	CE413XL-L1	M	3.7K	WW	
PCB-K-B	K	HP	CF210L-L1	BK	3.2K	WW	HP LaserJet Pro 200 Color M251nw/M276n/nw
PCB-K-B	K	HP	CF211L-L1	C	2.4K	WW	
PCB-K-B	K	HP	CF212L-L1	Y	2.4K	WW	
PCB-K-B	K	HP	CF213L-L1	M	2.4K	WW	
PCB-K-BN	K	HP	CE410XL-L1-N	BK	4.7K	WW	HP LaserJet Enterprise 300 Color M351, MFP M375nw, 400 Color M451nw/ M451dn/M451dw, MFP M475dn/ M475dw
PCB-K-BN	K	HP	CE411XL-L1-N	C	3.7K	WW	
PCB-K-BN	K	HP	CE412XL-L1-N	Y	3.7K	WW	
PCB-K-BN	K	HP	CE413XL-L1-N	M	3.7K	WW	
PCB-K-BN	K	HP	CF210L-L1-N	BK	3.2K	WW	HP LaserJet Pro 200 Color M251nw/M276n/nw
PCB-K-BN	K	HP	CF211L-L1-N	C	2.4K	WW	
PCB-K-BN	K	HP	CF212L-L1-N	Y	2.4K	WW	
PCB-K-BN	K	HP	CF213L-L1-N	M	2.4K	WW	

5. Uni-3 Update Model List(N/A)

“Apex” herein refers to Apex Microelectronics Co., Ltd. The information contained herein is subject to change without prior notification. Apex shall not be liable for technical or editorial errors or omissions contained herein. Photographed products may not always match the description.